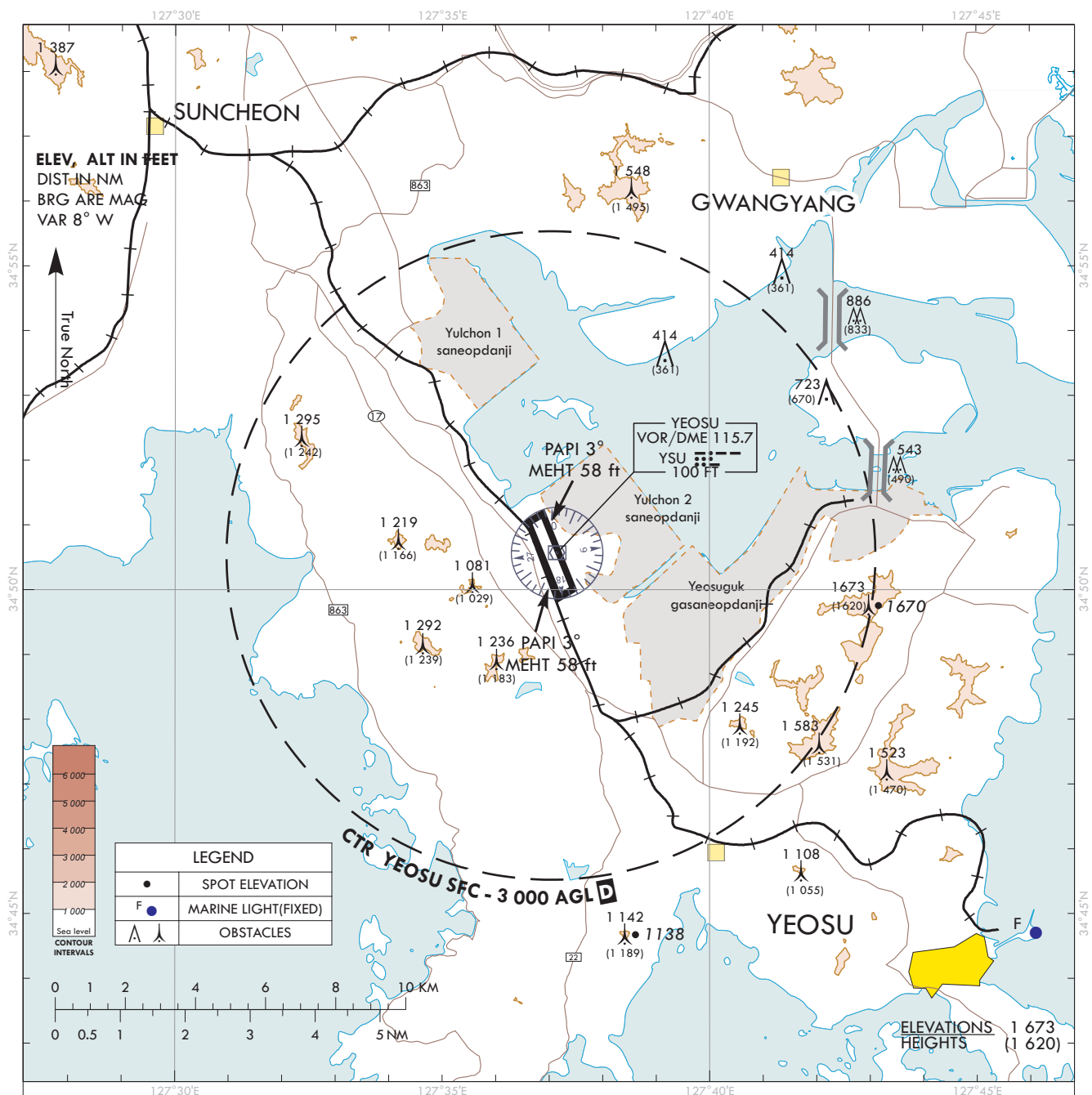


**VISUAL  
APPROACH  
CHART - ICAO**

AD ELEV 53 ft  
HEIGHTS RELATED  
TO AD ELEV

SACHEON	APP	135.4
YEOSU	TWR	122.5
		240.9

**YEOSU/Yeosu**



**ATS Airspace Classifications**

1. Class D : Radius of Yeosu Airport ARP(345032N 1273702E)

Vertical limits

- Within 5 NM (SFC – 3 000 ft AGL)
- And including areas which are extended northbound from 345402N 1273242E – 345617N 1273136E – 345747N 1273606E – 345533N 1273712E and southbound from 344532N 1273652E – 344317N 1273758E – 344447N 1274228E – 344702N 1274122E (1 000 ft AGL ~ 3 000 ft AGL)

Speed limits : 250 kt IAS or less below 10 000 ft AMSL

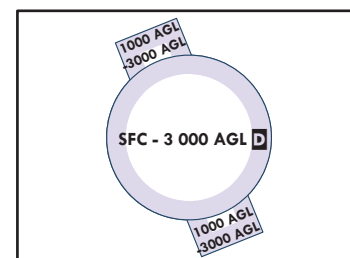
200 kt IAS or less at or below 2 500 ft AMSL within 4 NM of the airport

2. Class E :

Vertical limits

- Controlled Airspace from 1 000 ft above the surface or the sea level to FL 600 and less except Class A, B, C and D.

Speed limits : 250 kt IAS or less below 10 000 ft AMSL



Change : Information of OBST(1 080 → 1 081, 1 242 → 1 245, 1 581 → 1 583, 1 547 → 1 548) and Establishment of ATS airspace classifications.